

100 copy

Newsletter of The Delmarva Driving Club, Inc.
Pao Lin Hatch, editor

Feb 2011

DELMARVA



DRIVING CLUB INC.

DDC Meeting Schedule

Feb 2 BOD Meeting via meeting via conference call 6:00 pm
Call in # 877-216-1555
Pw # 290535

March 2 BOD meeting via conference call 6:00 pm
Call in # 877-216-1555
Pw # 290535

Inside This Issue:

Feb 12 Getting into Multiples! At Hollyville Farm- Frances and Wayne B. have graciously offered to host a talk and or possibly a drive (weather permitting) with their four-in hand team. 11AM start time. Focus and emphasis will be on Multiples and Pairs driving- safety, equipment, equine suitability and more. This is a DDC event. 11AM start time. Please RSVP to 302-381-2979 or email @ franbak@aol.com. See Flyer this issue for details.

Feb 20 President's Day Drive at Turner's Creek-Sassafras River. Casual and weather dependent, (extreme weather may cause cancellation). POC Pao Lin @ 240 274 6180. paoball2000@yahoo.com No need to RSVP. Drive off @ noon.

March 19 Grassymeade Drive, Chestertown, MD. POC: Michael Lawrence 410-810-2997. *Private Lessons with Samea Baker available that same day. Please Contact Samea directly @ 610 310 0962 to set up a lesson time and to discuss your goals

April 9 Cair Paravelle Continuous Drive, Still Pond, MD -POC Anna Klumpp. Montalmax@hotmail.com. Rain date April 10. Flyer to follow. Various divisions offered.

Feb 2011 Newsletter Contributors

Contributors: Pao Lin Hatch, Martha MacDonald, Frances Baker, Paula Barto, John Bolinski, Darlene Logan, Cecilia Uhlman, Lois Evans, Martie Bolinski, Jane Ramsey

Inside this issue:

Meeting Schedule—p 1
 Upcoming DDC Events—p 1
 BOD Meeting Minutes 1/5/2011—p 2
 DDC's Proposed Budget—p 2
 Skiing behind the Stone Boat—p 3
 Bylaw Changes for 2011—p 3
 DEC Reminder—p 3
 Helpful Horse—p 4
 Out and About —p 5
 DDC Calender —p 6
 Redden Forest Map —p 7
 Classifieds and Clinic news—p 8
 Advertisers info —p 9
 Flyer for Multiples—p 10

**Delmarva Driving Club
 General Membership Meeting
 Jan 5 2011**

Attendees:

Fran Baker, Martie and John Bolinski, Sherry Harris
 Pao Lin Hatch, Donna Hurst, Martha MacDonald
 Jane Ramsey, Visitors Lois and Noble Cahill

The December minutes and treasurer's reports were accepted as published. In Old Business, John reported that membership in CAA is \$55 per year. It was approved to take an ad in the Delaware Equine Council directory and retain our membership. Donna will call to change the name and date of the DDC show to May 7, 2011. \$250 was approved for the DEC scholarship, \$90 for the DDC ad and \$20-30 for DDC's membership in the DEC. Fran Baker offered Hollyville Farm for a ground clinic on driving multiples, tack, how to hook up etc on Feb 12, 2011. This is an official DDC event, starting at 11AM with a light lunch served afterward. This is a weather related program and in the event of inclement weather, it will be cancelled. The check register was audited and approved. Martha MacDonald questioned the need to vote on and approve new members. John B explained that as a 501(c)7 organization, we retain a tax free status if we 'limit' our membership to people who drive or wish to learn about driving. That explains the questionnaire on the membership form, asking what areas our members are interested in learning about or participating in. Anna Klumpp is sponsoring a DDC Continuous Drive on April 9 and individual lessons will be available on April 10 at her farm in Still Pond MD. The lessons on the 10th will not be a DDC event and are first come-first served. Jane Ramsey reported that she still needs volunteers

Delmarva Driving Club Proposed Budget 2011

Projected Income	
Membership	\$1,910.00
Newsletter Ads	\$350.00
Calendar Sales	\$300.00
Pleasure Driving Show	\$3,000.00
Shirts/Hat Sales	\$20.00
Christmas Party	\$40.00
Donations	\$100.00
Total Proposed Income	\$5,680.00
Projected Expenses	
Liability Insurance	\$1431.00
Newsletters	\$400.00
Dues - ADS	\$60.00
Dues - CAA	\$55.00
Dues - DEC	\$20.00
Advertising, DEC	\$90.00
Misc. Printing (flyers/business cards)	\$50.00
Christmas Party	\$150.00
Pleasure Driving Show	\$2,500.00
Education Fund	\$200.00
Benevolent Fund (includes Sunshine)	\$200.00
Drives	\$200.00
Trailer Tags/maintenance	\$40.00
Donations	\$400.00
Clinics	\$200.00
Website	\$160.00
Postage	\$350.00
Conference Calls	\$168.00
Total Proposed Expenses	\$6,674.00
Final Total	- \$994.00

for the DDC show. Fran Baker will reserve radios for the show. The judges have been hired, Marti Bolinski will arrange printing of the show program and ribbons have been ordered as they were on sale during the winter. A Commercial Driver class will be added to encourage commercial drivers to show their carriages, antique business wagons, etc. A cash prize will be offered, sponsored by the Hatch's. Volunteers are needed as gate keepers, cones movers for the Progressive cones class, ribbon runners, scorers, etc. Folks who won't be showing themselves are asked to pitch in to make the show run smoothly. *Impromptu drives will be coordinated during the winter by blast emails. These are not DDC events but rather a gathering of folks who want to get away from the farm, meet fellow drivers and explore new venues. There is no RSVP and drives are weather dependent. If you are there at the appointed time, you can drive with others. Otherwise you are on your own. They will also be posted on our Yahoo Groups page and on Facebook. Because they are totally weather dependent, they won't be posted in newsletters. Members are encouraged to watch for emails or postings on the other sources.

Respectfully Submitted, Martha MacDonald

Skiing behind the Stone Boat

By Lana Zimbelman of Riverdale, North Dakota
Courtesy of Farm and Ranch Living Magazine

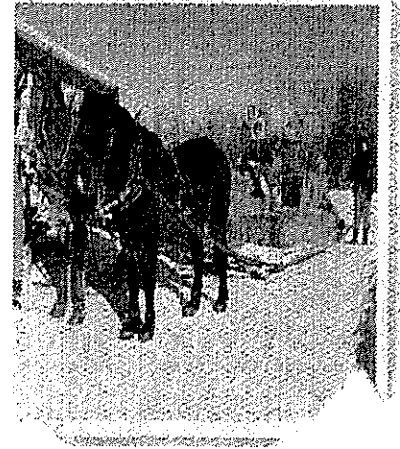
Skiing behind the stone boat was part of our winter routine. Dad always used a horse team to do chores in the winter; he felt they were more reliable than tractors. He loaded the stone boat with square bales and hauled them to the pasture to feed the cows. My five sisters and I would help.

One year, we got the idea to tie some baling twine around one of the boards on the stone boat. We put the little red skis we'd been given for Christmas, grabbed the twine and skied behind the stone boat as Dad did his chores.

Most of the time the horses walked, but sometimes they took a notion to trot, or Dad would speed them up a little and we'd get a faster ride.

The best part was when the stone boat went around the corners. Then we had to try not to run over each other. Once in a while Dad had to stop to pick up those who hadn't made it. He waited patiently while we got set up again, then continued his chores. Mom took this picture in 1979. I'm the one standing at the back of the stone boat.

I'm sure having us ski behind the horses and the stone boat meant chores took longer but it never felt that way because we were having so much fun.



By-Law Changes for 2011

The membership at the December 11, 2010 meeting voted to change the by-laws relative to determining the amount of dues to charge for the coming year.

The old by-laws tied the dues with the proposed operating budget. If we did this for 2011, the dues would go from \$20.00 to \$24.00 for individual memberships and from \$30.00 to \$36.00 for family memberships.

Since the treasury is in such good shape thanks to past events such as Fall Harvest, Pleasure Driving Show, Advertisers, Calendar sales, etc., the membership saw no need to vote on raising the dues every year at our annual December membership meeting.

A change was made to the official by-laws removing the words that the dues were tied to the proposed operating budget.

Anyone wanting a full, revised copy of the by-laws can contact John Bolinski on email at bolinsj@myshorelink.com or by phone at 410-398-0257.

CLINIC NEWS

Long Lining Clinic with Bo Jena -February 14, 2011

Do you have the winter blues and would like to find a creative outlet for winter training? Come learn more about a terrific tool to employ during the blustery winter months: long lining! We invite you to come learn from one of the world's leading authorities on long lining, Bo Jena. Hassler Dressage welcomes you to Riveredge and the new training facility with heated indoor arena, come join us and take advantage of this great learning opportunity

When: February 14, 2011, 7:00 am to 4:00 pm **Where:** Hassler Dressage Training Facility at Riveredge 1455 Cayots Corner Rd., Chesapeake City, MD 21915 **Cost:** \$45 general admission (includes light lunch if pre-registered by Friday, February 11th. *No videotaping* allowed during the event, <http://www.hasslerdressage.com/symposiums/jena-longlining.html>

Sunshine:

There is \$88.96 remaining in the Sunshine fund.
One card was sent to Noble Cahill for surgery expenses.



Please remember to contact Lois Evans if you know of any sunshine items. Input is important.

Helpful Horse Column

ROAD SAFETY SERIES

(Summarized from ADS Buying Guide 2010)

Have you grown bored with driving on your farm? Are you looking for a more economical way to run errands? Would you enjoy a relaxing and satisfying drive on a warm, sunny morning, actually listening to the rhythm of your horse's hooves and appreciate the beauty of nature.. If you can do it without worrying about your horse becoming the next Rocket Man.

The purpose of this article is to help you prepare to drive in the most non horse friendly environment you can imagine: the public roads. Motorists do not realize (or care) that unlike a machine, the horse has a mind of its own. In their eyes, you must be in control. Auto drivers won't notice that plastic bag flying across the road. Kids on the school bus will not be the only occupants of passing vehicles to yell, and possibly throw things at you. There are people who actually think this is funny to see your horse bolt as a result of something they did. **Horses have the right of way** on many states' roads, but most motorists do not know it. Don't expect considerations and when you do experience them, show your appreciation and wave!.

Real World Road Perils:

Air brakes on trucks and buses always seem to hiss when right alongside the carriage. Consider yourself lucky when these vehicles slow down. Engine brakes or "Jake brakes" are like a huge growling animal. Roadside equipment have mowers, trimmer and blowers all going full blast and workers are too busy to notice or look up. Vehicles pulling noisy trailers, dump trucks emergency vehicles, dogs barking, bicyclists and motorcycles are just a few examples.

Make Yourself Visible:

Increase visibility by attaching a flag in a conspicuous color like blaze orange or neon green to your carriage. Wear a safety vest with reflective tape. Hang a SMV sign on the rear of your carriage. Put a banner on the back of the carriage asking motorists to pass wide and slow. Wear a helmet and put reflective tape on your helmet. Put reflective bands on your horse's legs and bridle.

Check out the Route:

By driving your planned route in a car, you can locate potential advantages and hazards. Riding a bicycle the route may be even

NEWS FLASH TO ALL MEMBERS:

Many of our DDC members drive regularly at nearby parks. Although these are not "OFFICIAL DDC DRIVES", all friends are welcome to come drive or ride along! The more the merrier! They are often spontaneous, without formality, without RVSP, without a host or formal luncheon goodies and very weather dependent. If you would like to be given a call by the host/hostess, please call any DDC BOD member (Donna, Jane, John, Martha, Sherry or Pao Lin and let them know you are interested in such events!

More useful as the slow speed will enable you to see more.

Check out the Route:

By driving your planned route in a car, you can locate potential advantages and hazards. Riding a bicycle the route may be even more useful as the slower speed will enable you to see more—your perspective from a bicycle will be similar to what you see from a carriage. Look for such things as shoulders, driveways, ditches, blind curves, pot-holes, large unguarded drop-offs, culverts, large road debris and more.

Choose your Time:

The time of day you drive can make a big difference in what you encounter on the road. Go out between mid morning and afternoon, avoiding morning and late afternoon rush hours. Or avoid late morning on Sundays. Motorists are more likely to be considerate and willing to share the road if they are not late for work, in a hurry to get somewhere or annoyed at the end of the day. If there is a hunting season near you, be aware of it to avoid roads during the height of the season.

Signal your Intention:

Turn to your **right**: Extend your left arm out straight at should height and bend your forearm upward, creating a right angle.

Turn to your **left**: Extend your left arm straight out from the shoulder, no bend at the elbow.

Stop: Extend your left arm out straight at should height and bend your forearm downwards.

Out and About New Year's Day Playtime

Carol Seiler, Pao Lin Hatch and Martha MacDonald met for a New Year's Day drive at the Tuckahoe Equestrian Center. As it is still hunting season, we chose to meet at noon. After hitching the mini, the Hackney and the draft, we headed out through the woods. Everyone had added bells to their harness and wore blaze orange or yellow vests to remind any hunters that we weren't deer. The effect was quite lovely as the weather was rather warm (for January), the horses were happy to be out and the ringing bells added a festive air. We played follow the leader, winding around grassy areas and down wooded lanes. All horses were well behaved on the trail and Carol's smile was so broad it brightened the afternoon. We were off the trails and out of the woods by about 2:00pm so no threat to any hunters.

A great day and if the weather holds, we'll hold more impromptu drives!

DDC Suitable Driving Horse Clinic- Hartly DE Jan 15

George Parris set the stage by looking Moose, our host's 11 year old grey Percheron straight in the eye and noting that Moose had nice wide set eyes, as well as an absence of white showing around the eyes. George then commented on overall conformation, but stated that no breed holds a reign (rein?) on suitability. Each horse must be considered on its own merit. What is the horse's ATTITUDE? What is horse's level of patience? Will he stand and can he be tied? Can he tolerate the crupper? Then Moose forfeited his center stage position to Cecelia Uhlman's young (coming four) black Morgan mare; George directed everyone to look at the wide set of eyes (any wider and they be on the mare's shoulders!!); her patience to stand in the cross ties; and her overall suitable confirmation.

George and Cecelia then harnessed the mare and George took her for some turns; backs and 'whoas' in the snow to demonstrate the total package of a future star.

Jane Ramsey talked about the 2011 show, some new changes to the event, a planned Commercial Class with a cash prize, Super Reinsmanship and sent out a plea for volunteers and entries to our Spring Show May 7th to be held @ the 4-H Park in Denton, Md.

Conversations, questions and answers flowed freely across the aisle amongst established members; new members and soon (we hope!) to become members of DDC. Since this was a DDC event, the food table was crowded with delectables to tempt our New Year's resolutions to diet! Cecilia's Brownies and Bill Hatch sent his wonderful venison no-bean chili. Thanks Bill and to all the other temptors! In attendance were DDC members: Donna Hurst (Hostess), Sherry Harris, Pao Lin Hatch, Jane Ramsey, Sharon Little, Carol Seiler, Cecelia Uhlman, Liz Parris, Donna's friend Frances.

Delaware Equine Council meets on the 3rd Monday of each month at the Harrington, DE Public Library. Special meeting locations may vary. For more information check <http://www.delawareequinecouncil.com> Or phone Stan 302-684-3966

Calendar of Events—DDC Items are in Bold

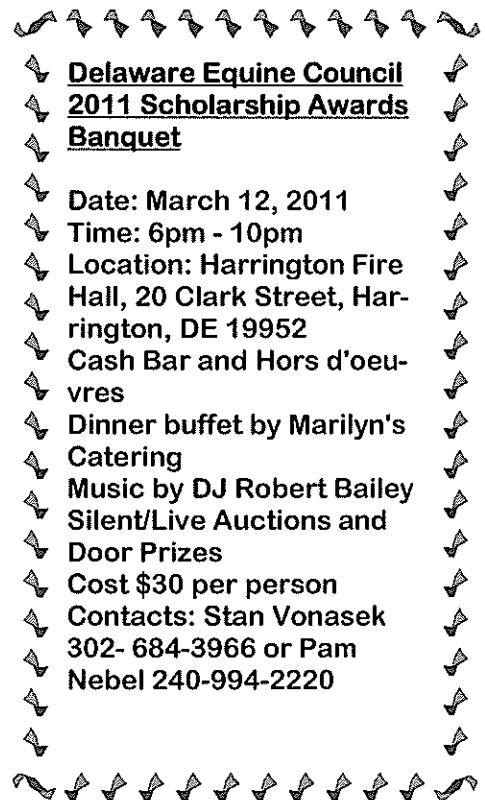
More information about activities will be available in future issues. Check for changes and additions. If you plan to attend a DDC sponsored event, PLEASE contact the host before the event.

All members are welcome to attend the monthly BOD meetings, but we would appreciate a heads-up if you plan to attend so that we can phone in case of any change in time or location.

- Feb 5 & 6 BVDC Junior Driver Clinic at Kendlewood Farm. POC Margaret Grillet margaretrillet@yahoo.com
- Feb 5 Horse Trailer Parking Clinic and Driving Challenge at TEC. Get more comfortable driving and parking your trailer! POC Pao Lin (240) 274-6180
- Feb 12 Multiples Talk at Hollyville Farm. Frances and Wayne Baker have graciously offered to host a talk and or possibly a drive with their four-in hand team. Focus and emphasis will be on safety, equipment, equine assets and more. This is a DDC event. 11AM start time. Please Rsvp to Franbak@aol.com 302-381-2979. See Flyer this issue
- Feb 12 BVDC Intro to Driving Part I Goucher College, Townsend, MD. Marjorie Richmond 410 323-3827
- Long Lining Clinic with Bo Jena February 14, 2011. Chesapeake City- see page 8
- Feb 20 Sunday President's Day Drive At
- March 12 DEC Scholarship Awards Banquet. See box right.
- BVDC March 19 Intro to Driving Part II Goucher College, Townsend, MD Marjorie Richmond 410 323-3827 margiebr@earthlink.net
- March 30 - April 1 -Gladstone HDT: Hamilton Farm, Gladstone, NJ; www.gladstonedriving.org or Gayle Stinson at welshpony-power@yahoo.com
- **March 19 DDC Drive - Grassymeade, Chestertown, MD POC Pao Lin Hatch 240 274 6180 or Mike Lawrence 410-810-2997 leave message**
- April 3 Sun- 10am "Wheels meet Carriages" clinic-TEC sponsored event which will allow horse people to introduce their saddle horses to the joys of carriages and horses and provide an educational outlet for carriage owners. All carriage people invited to come and bring their equines for the day! POC Pao Lin Hatch 240-274-6180]
- April 9 "Get Ready for Spring" Tack Swap at Northhampton County 4-H Center-777 Bushkill Center Rd. Nazareth, PA. 11-2pm Info POC 610-837-7294
- April 2nd---rain date April 9th; Mt. Hermon Plow Days, Salisbury MD. Contact Oren Perdue 410-749-1723
- **April 9 Cair Paravelle Continuous Drive, Still Pond, MD. One day event. Separate divisions for VSE, Pony and Horse. POC Anna Klumpp (410) 708-3588, Rain date April 10.**
- April 10 Lessons with Samea Baker @ Cair Paravelle, work on your goals in dressage, improving in cones or even marathon driving! Contact Samea @ (610) 310-0962. airesade@yahoo.com
- April 10 BVDC Long Lining Suitable Horse Clinic. Kathy Schmitt 717 235-7061 kawschmitt@att.net
- Mid-Atlantic Whip Challenge Series: 4 regional show series which begins with the DDC

Show, My Lady's Manor Driving Club, Brandywine Valley Driving Club and ends with the Susquehanna Valley Driving Club. Call POCs for each show for more detail.

- **May 7, 2011—DDC Pleasure Driving Show. More info to follow, POC is Jane Ramsey.**
- April 16,17 BVDC Junior Clinic POC Pam Kister 717 779-4542 Greyhorsestable@hotmail.com
- April 19, 20 Martin's Carriage Auction, Lebanon, PA 717 354 6671 <http://martinauctioneers.com>
- **April 30, 2011-DDC Clinic- Long Lining Clinic- Ann Rawls-Smyrna, DE; Fee for participants, auditors free. ramseyjb@yahoo.com, 302-540-4683**
- May 15 My Lady's Manor Driving Club Show- Spring Valley Park, Winterstown PA. Open to non-members, Dana Bright



Delaware Equine Council
2011 Scholarship Awards
Banquet

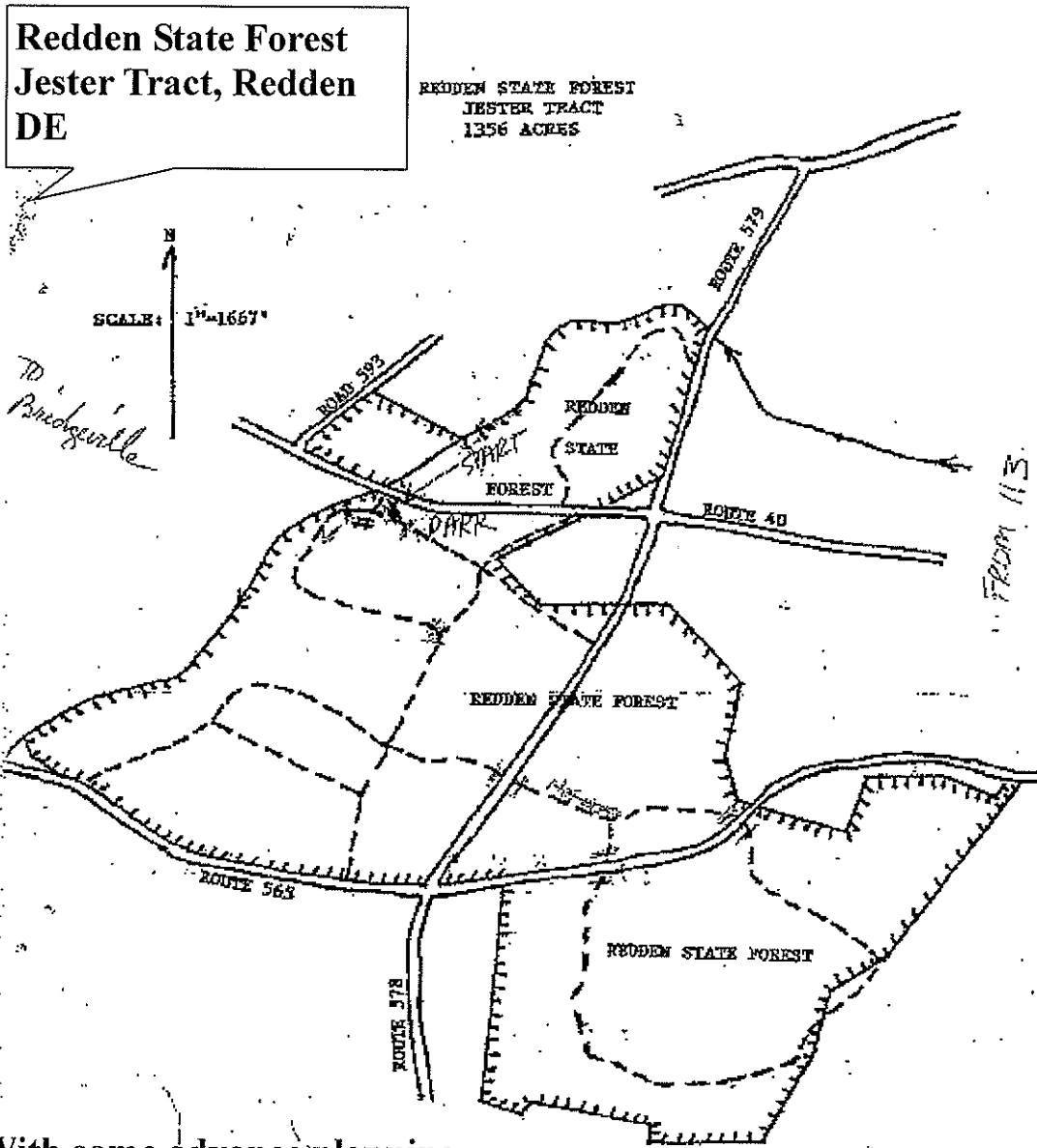
Date: March 12, 2011
Time: 6pm - 10pm
Location: Harrington Fire Hall, 20 Clark Street, Harrington, DE 19952
Cash Bar and Hors d'oeuvres
Dinner buffet by Marilyn's Catering
Music by DJ Robert Bailey
Silent/Live Auctions and Door Prizes
Cost \$30 per person
Contacts: Stan Vonasek 302- 684-3966 or Pam Nebel 240-994-2220

Please have items for the next 2011 Delmarva Driving Lines to Pao Lin Hatch,

Local Driving Area Maps

Each month* DDC will try and print a map of some of the local parks which are conducive for carriage drives. If you have a favorite state or county park or natural resource area which you would like to share, please send a JPEG picture to the editor for inclusion into the newsletter

* space available*



With some advance planning, a key can be picked up, and the gates can be unlocked for carriages to enjoy the dotted vehicle trails at this park!

(2)

- GATES (LOCKED)
- PICNIC SITE
- VEHICLE TRAIL
- TAXI DICER
- FOREST BOUNDARY

Classifieds

Sale: Meadowbrook Cart, Halfinger/ Fjord/Cob sized. Needs some refinishing. Flexishafts. Nice comfortable ride on road or pasture. Asking \$300. contact Martie Bolinski 410-98-0257 bolinsm@myshorelink.com

Sale: Harnesses- some large pony/ small horse size light harness available. Items are located in North East, MD. Prices negotiable.

Sale: Pioneer Forecart: Halfinger/ Fjord Cob Sized. Padded Bench seat. Rubber tires. Virtually indestructible. Brakes. Asking \$400.

Sale: Sleigh Robes for Sale: size reg. Dimensions: 50"x50"
 1-Chase- very vivid colorful/black
 1- Chase - black/tiger pattern
 1-Torco-black/dark green
 they are all in great shape
 call 302-629-5233 Paula

Note: Classified items will run for two months unless requested otherwise. Please let us know if your article has sold or if you want to continue the ad after 2 months.

*Message from Jane Ramsey,
 DDC Spring Show Manager*

Hey members:

I am looking for two volunteers to help me with the show before hand. Please let me know if you can help out prior to the show!

Jane Ramsey @ ramseyjb@yahoo.com or (302) 659-2827

**Delmarva Driving Club, Inc.
 Long Lining Clinic with Anne Rawle
 April 30, 2011**



Ramsey Farm, 1436 Wheatleys Pond Road, Smyrna, Delaware

Long Lining is a great technique that many trainers use to start a horse or to introduce a new step in training. Your horse gets to learn a technique without also balancing the weight of a rider or carriage. This clinic will focus on teaching the rider/driver on how to long line and to emphasize the importance of bending for both the green and older horse.

You will need to bring your horse, an open bridle, a surcingle or saddle, two lunge lines, a whip, gloves and good walking shoes. Auditors are welcome!!

Our clinician is Anne Rawle from Oxford, Pa. She is an "S" licensed dressage judge, competing successfully at Grand Prix and overseeing the breeding program at her farm. She is often found at "Driving by the Side" as the commentator for driven dressage. She is an advocate of using this technique to teach our horses and will teach you how to utilize this exercise successfully.

Registration is required. There will be three sessions available. Please contact Jane Ramsey @ 302-659-2827.
 Cost:

- \$20 for Delmarva Club Members participating with a horse.
- \$50 for Non-Members participating with a horse.
- \$5 for Non-Members to audit.
- Free for Delmarva Club Members to audit.

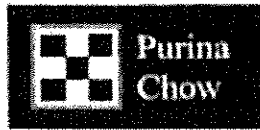
Delmarva Driving Lines - Feb 2011

DAVE WILSON
Auctioneer & Sales Mgr.

"Our Services Have
Often Been Copied,
But Never Duplicated"

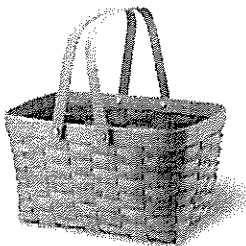
WILSON'S AUCTION SALES, INC.
COMPLETE AUCTION SERVICE AVAILABLE
Antiques * Real Estate * Personal Property * Appraisal
PUBLIC CONSIGNMENT AUCTION EVERY SATURDAY 10:00 A.M.
AUTO AUCTION EVERY TUESDAY 6:00 P.M.

Rt. 113, 1 mile south of
Lincoln, Delaware
05/10
302-422-3454
FAX 302-422-0462



Bryan &
Brittingham, Inc.

P.O. Box 156
Delmar, Delaware 19940
Phone 302 846-9500
Home Phone 302 846-2180



CATHERINE A. PEPPER
Independent Branch Leader

22585 Sussex Pines Road
Georgetown, DE 19947
(302) 745-5056

www.longaberger.com/cpepper
cappd77@aol.com

til01022011

Royal Acres
Bred & Raced Horses

*"Hastings - The Horse That Captures
the Hearts Of People."*

Dave and Lee Wilson
Route 113, P.O. Box 84
Lincoln City, Delaware
19960
(302) 422-3454 FAX (302) 422-0462

TWIN OAKS GRAPHICS - Custom Artwork



Stained Glass, Watercolor, Acrylics,
Hand-painted Clothing, Notecards &
Stationary.
Reasonable Prices. Custom work done from photos.
Contact: Martie Bolinski
Twin Oaks Graphics
986 Irishtown Rd., North East, MD 21901
410-398-0257
bolinsm@myshorelink.com
http://www.twinoaksartwork.net

til01012011

**NORWEGIAN FJORD
HORSE REGISTRY**

Want more information about the beautiful,
versatile Norwegian Fjord Horse?
website: www.nfhr.com
Registrar: Mike May at
registrar@nfhr.com, or phone toll-free
888-646-5613
or contact your local Fjord Horse
Ambassador, Martie Bolinski
bolinsm@myshorelink.com

SUPPORT OUR ADVERTISERS

They provide service to the equine community and
help the DDC with postage costs!

Still Space Available
Advertise Your Business in DelMarVa Driving Lines
\$50 for 12 issues

STANDLEE
Hay & Feed, LLC

Mark Schnelle
Partner

Cell: 302-545-1000
Ph: 302-737-5117
Fax: 302-737-5119
Email: mschnelle@standleenhay.com
Address: 1800 Ogletown Road
Newark, DE 19711
www.standleehay.com

DEC reminds all that all DEC dues are now due for 2011.

Driving Multiples

Demonstration and Drive (weather permitting)

At

Wayne & Frances Baker's Hollyville Farm

23430 Hollyville Road

Harbeson, DE 19951

11 AM, Saturday, February 12, 2011

We'll be demonstrating how to safely
Hitch and unhitch a pair or a team of four to
A four wheel vehicle.

Come dressed for the weather as we will
Drive off after we hitch with anyone who would like to
go.

A chicken salad/soup lunch will

Follow so please

RSVP

So we can prepare enough food to

Frances Baker

Cell 302-381-2979

Or franbak@aol.com by Feb. 10

Directions to The Baker's Farm

Hollyville Farms
23430 Hollyville Road
Harbeson, DE 19951

Frances Cell 302-381-2979

From the North

Take route 1 south. At Lewes turn right on route 9 toward Georgetown.
At the second traffic light turn left on route 5
At Harbeson. Go to the blinking light and turn right on Hollyville Road.
Farm is 9/10 of a mile on the right..dirt drive. You will see lots of brown
3 rail horse fence.

From the South

Take 113 north, at Millsboro turn right on 24, go through town and turn
left on Hollyville Road....After the Zoar Road intersection farm will be
on the left. Look for lots of brown 3 rail horse fence.

From Lewes

Take route 9 to Harbeson and turn left on route 5...at the Indian Mission
blinking light turn right on Hollyville Road. Farm is 9/10 of a mile on
the right. Dirt driveway...lots of brown 3 rail horse fence.

From Georgetown same as the above right at Harbeson.

Delmarva Driving Club
c/o Pao Lin Hatch
22988 Fairgale Farm Lane
Chestertown, MD 21620

President	Donna Hurst 302-492-3932 justamoose@comcast.net	Sunshine Lois Evans 302-875-4971
Vice President	Frances Baker 302-645-6164 frabak@aol.com	Web Master Pao Lin Hatch webmaster@Delmarvadrivingclub.com
Secretary/	Martha MacDonald 609-510-7465 armadale98@comcast.net	
Treasurer	John Bolinski 410-398-0257 bolinsj@mysshorelink.com	Webpage http://www.delmarvadrivingclub.com Newsletter Editor Pao Lin Hatch 240 274 6180 paoball2000@yahoo.com
Directors	Sherry Harris 410-482-2402 harris-curl@netzero.net Jane Ramsey 302-659-2827 jane.B.Ramsey@usa.dupont.com Pao Lin Hatch 240-274-6180 paoball2000@yahoo.com	

