

DDC Driving Lines October 2013



DDC Meeting Schedule

DDC Board meetings are open to all members! Just send a BOD member a note/email to let them know you plan to call in and announce yourself when requested.

October 3

Conference Call
6:00pm

Call in 877-216-1555

Password 290535#

November 7

Conference Call
6:00pm

Call in 877-216-1555

Password 290535#

December 5

Conference Call
6:00pm

Call in 877-216-1555

Password 290535#

Upcoming DDC EVENTS

- ◆ **Let's Get Driving Clinic- October 19 Saturday- Denton, MD- Contact Pao Lin Hatch, Details on page 7**
- ◆ **Donald and Darby Hewes Drive- October 27 Sunday - (Comegy Creek Farm), Chestertown, MD- Contact at 410-778-6409 or email Hewes3dFjord@hughes.net. Details on page 4**
- ◆ **Chris and Jane Bailey (Canvasback Farm) Drive- November 9 Saturday (rain date Sunday November 10th)- Sudlersville, MD- Contact Jane Bailey 443-988-1395**
- ◆ **Mt. Harmon Plantation Drive- Dec 7- Cecilton, MD Contact: Anna Klumpp 410-708-3588-details to follow**
- ◆ **DDC Holiday Party December 14 Saturday 6pm Nutter Marvel Carriage Museum, Georgetown, DE- Covered Dish Dinner. Contact Sherry Harris 410-482-2402**

October 2013 Newsletter Contributors

Contributors: Pao Lin Hatch, Martha MacDonald, Jackie McCann, Darlene Logan, Darby Hewes, Samea Baker, Sherry Harris

Inside this issue:

Meeting Schedule—p 1
 Upcoming DDC Events—p 1
 BOD Meeting Minutes —p 2
 DDC Treasurer's Report—p 2
 Grassymeade Drive —p 3
 DDC Slate of Officers and Board for election —p 3
 Out and About News —p 4
 Comegy Creek Pleasure Drive —p 4
 DDC Calendar— p 6
 Let's Get Driving Clinic —p 7
 Proof of Purchase program —p 7
 Cones Challenge —p 8
 Extra Board Meeting minutes —p 9
 Advertisers —p 9

usual but dip into our CD money to cover any shortfall that occurs if club events do not generate enough income during the year. The BOD will recommend using the existing monies. It was also approved to move some money out of the CD into the checking account to keep the minimum balance on hand to prevent bank charges.

Samea Baker is looking into a place to run the January Newbie Clinic. Frances Baker will be unable to present her February talk.

A show committee of Samea, Anna Klumpp, Donna Hurst, Sherry Harris and Jane Ramsey will determine who will be the day manager at a later date. The show will be held at the Denton MD showgrounds on the first Saturday of May 2014.

Respectfully submitted,

Martha MacDonald

September Board of Directors Meeting

Present: Donna Hurst, Sherry Harris, Jane Ramsey, Pao Lin Hatch, Jackie McCann, Caol Seiler, Martha MacDonald, Joan Smith, John Bolinski. Absent: Noble Cahall

Old Business:

At the Michael Lawrence drive on Sept 8, a donation of \$50 will be given on behalf of Michael towards the judge expenses. The sound system purchase decision has been postponed. Pao Lin waiting for updates from Anna Klumpp and Samea Baker regarding the events at Anna's Farm. Sherry Harris will represent DDC for the DEC event at Redden Forest. Sherry Harris has requested volunteers to provide meat dishes for the Christmas party at the Nutter Marvel Museum in December. Jane Ramsey offered to bring something. Jane also suggested trying to get Joe Yoder (international CDE driver from PA) or she will look for other potential speakers.

Carol Seiler has a number of people interested in joining who would do so before the October BOD meeting in order to participate in the driving clinic. She was encouraged to get them to send their applications so that the BOD could act at the next meeting.

New Business: Jackie presented the proposed operating budget for 2014. Due to the expected shortfall, she proposes raising the dues \$5.00 per category but even that won't balance the budget. Jackie will explain the situation at the Christmas Party/general membership meeting. The alternative is to function as

DDC's Treasurer's Report

DDC's Treasurer's Report

Beginning Balance – 08/26/2013 \$1,646.27

Deposits:

Membership Dues 20.00

Total Income 20.00

Expenses:

Conference Calls 207.77

Postage 7.82

Total Expenses 215.59

Ending Balance – 09/27/2013 1,450.68

Savings Account 1,299.74

CD Balance 7,871.46

Total Cash Available \$10,621.88

Grassymead Drive by Pao Lin Hatch

The perfect low key schooling event was held at Michael Lawrence's beautiful Grassymead Farm on September 8th. The weather was lovely with a nice breeze coming off the Chester River. Mike offered up delicious London broil steak, grilled to perfection by Bill Hatch. A total of 5 carriages took a reinsmanship pattern/test, a cones course and navigated some cross country CDE style obstacles during the course of the day. Yummy side dishes brought by other DDC members accompanied the steak offered by our host. A 50/50 earned the club and Annie Renzetti \$25 bucks. A big thanks to Pam Kister for judging the

Reinsmanship test, Carol Seiler for helping with setup and our fabulous host, Michael Lawrence for his generosity.

If you would like to host a DDC event, with or without horses, please contact any DDC Board member. Reimbursement for some of your expenses is very doable!

We can orchestrate the entire event, all you have to do is choose the date and open your home to the club!

EVENT COORDINATORS AND HOSTS

Have you been keeping track of those hours for those fabulous volunteers who have been helping you this year? Please submit this information to Martha MacDonald, our DDC Secretary at armadale98@comcast.net Or call 609-510-7465

DDC 2014 Slate of Officers and BOD

Proposed Slate of **Officers** and Board Members for General Membership Vote and Approval are:

- * Pao Lin Hatch- President
- * Donna Hurst- Vice President
- * Martha MacDonald- Secretary

* **Board Members seeking re-election:**

- * Jane Ramsey
- * Joan Smith
- * Sherry Harris

* **Board Members recently appointed and not running until 2015**

- * Carol Seiler
- * Nobel Cahall

TREASURER NEEDED~~~~@!!! PLEASE CONSIDER VOLUNTERING FOR THIS POSITION

Out and About News

Any news to share with your DDC members? Email or call Pao Lin, DDC Newsletter Editor

Newer DDC member, Deborah Spaulding competed safely in the Training Pony Division at the challenging mid-Atlantic Region event known as the Glen Willow Combined Driving Event. A friend of the DDC, Allan Shiells also safely competed.

Barbara Belden is organizing a Mid-Atlantic Regional Drive Breakfast for participants at the ADS Drive in Fairhill on Sunday Nov 3. If you are interested in helping Barbara, and her crew, give her a call at 410-708-4654

Frances and Wayne Baker took the **Robert Dunn Memorial Perpetual Trophy**

for Sportmanship in Driving at the historical Ludwig's Corner Horse Show-Invitational Carriage Exhibit with their team of Clydesdale Hackney crossed horses. The field included a large number of teams, pairs and singles in a spectacular Concourse d' Elegance competition.

Darby Hewes reports proudly that both of her Fjords, Skogen and Karison, scored extraordinarily well at recent NFHR Fjord Breed Evaluations.. WELL DONE!

DDC members shined at the My Lady's Manor Pleasure Driving Show. In attendance from DDC was Marcie Wozniak, Pao Lin Hatch, Martha Duchnowski, Samea

Baker, Debbie Spaulding, Pam Kister and Markie Blom.

The Joan and 'Bucky' Smith family went to Fort Worth, TX to cheer on their son Ryan who competed in the Mustang Million Adoption and Competition. Way to go! Joan has adopted the mustang and maybe it will be her next driving horse?

DDC members Anna Klumpp and Samea Baker held the first of a series of three Cones Challenge Competition at Anna's Cair Paravelle Farm in Still Pond. Next event, open to all is at the same location on October 12.

Pleasure Carriage Drive at Comegys Creek Farm

Sunday October 27, 2013 -10:00 a.m. until 3:00 p.m.

Various Carriage Trails on Property

Drive off at Leisure

Cones Course and Dressage Field

available for practice and schooling

Lunch at 1:00 p.m. in the barn shop



*** Please bring something to share, Ham will be provided by the Host

RSVP and Questions

Darby & Donald Hewes

hewes3dFjords@hughes.net

410-778-6409 Comegys Creek farm

UPCOMING DDC EVENTS

November 9 Saturday

Saturday November 9th - rain date Sunday November 10th... not sure? Call Jane's cell phone AM of drive for message if the weather is questionable 443-988-1395

Come drive with the Bailey's at Andover Meadow Farm. We will have every type of driving surface available for you to explore at your leisure including:

Mowed wide CRP grassways. This would much like the surface at our show. Any type wheel can negotiate, fairly dry and clean even when it has rained.

Tons of wooded carriage trails. Hard pack dirt. We drive with both pairs and singles , pneumatic or hard wheel tires work. There are some trails that have water crossings but all have dry de-tours.

A mowed ring with cones course and carriage bridge. (ie: about 1 ft high and wide for carriages - will hold even Frances' gang!)

Obstacles set out in the hay fields to drive a will.

For those who like to drive on the road- you can do so safely with about a 2 mi out and back drive with little to no traffic. We will be notifying the neighbors and putting out Caution signs.

We will probably have something fun on course - for those with good observation skills with a fun prize.

Chris wants to grill something so bring a dish to share. Parking is easy in and easy out - flat with lots of room to turn around. Bring your camp chairs for sitting back a spell after the drive to munch and socialize.

Directions from Chestertown area : 544 to Crumpton. Right on 290 towards Sudlersville. Turn left on MD 300 Sudlersville Rd. Through the town of Sudlersville and then continue another few miles to a Right on Duhamel Corner Road (Darlene's Bar on corner) first Left on Sawmill Road. Right at end on Peters Corner Rd , one mile. You will see fenced pastures on both sides of the road and that is our farm. Continue past the old farmhouse beyond the post and rail fences and turn Right into the parking area.

From Caroline County - Denton area: MDE 313 to MD 302 Barclay Rd. Right on 302. Left on Peters Corner Road. Go through 4 way stop sign and then we are one mile, Turn Left into parking area field. From S. Delaware: You have options... Rte 13 to Rte 8 out of Dover, to Marydel. Stay on Rte 8 to Templeville and turn left at T intersection. Peters Corner Rd is 1/8 mi on your right. Follow directions from Caroline county from there.

or- North Dover /Smyrna - 13 to 300 West towards Maryland. Through Kenton and into Maryland. Turn Left on Peters Corner Rd and go 2 Miles. Parking field is son the right. Address for GPS purposes is: 2408 Peters Corner Rd Marydel, MD 21649

December 7 Saturday

Mount Harmon Plantation Drive

Earlville, MD

CECIL COUNTY

DETAILS TO FOLLOW

BE KIND.. RSVP YOUR INTENTION TO COME TO THIS EVENT TO YOUR HOST, Anna Klumpp

SUNSHINE UPDATE

DDC's Sunshine Chair, Darlene Logan, reports that a *Get Well* cards were sent to Dakota Bailey for injuries sustained in a recent auto accident and to his mother, Jane for accidents around the farm. Additionally, a *Condolences* card was sent to Linda Thomas for the sudden death of her mother.

Calendar of Events—DDC Items are in **Bold**

DATE	EVENT NAME	CONTACT/RSVP	WHERE
5- Oct	Let's Get Driving Clinic	Intro to Driving Clinic –Part I by George Paris. All Day or Part Day, Lunch included with all Day rate. Pao Lin Hatch 240-274-6180 paoball2000@yahoo.com to reserve your spot!. See Flyer included	Denton, MD
8-13 Oct	National Drive & Ride	http://www.nationaldrive.net/	Lexington, KY
13-Oct	Chapter One HDT	Chapter One Farm, Hpax-ton@chapteronefarms.com ; http://www.americandrivingsociety.org/06_omnilistings/10ChapterOne.asp	Pedricktown, NJ
11-13-Oct	Carriage Assoc. of America's –Visit Long Island Museum of American Art Carriage Tour and Tour of Historic NY Stables	This is CAA event and a non-DDC event; Visit CAA website to see details of this fabulous event. Cost \$225 (includes many meals and admission to the museum and tour bus excursion to private estates nearby, excludes travel to NY and hotel costs)	Stonybrook, NY
12-Oct	Cones Challenge Series	2nd installment of the Cones Challenge Series Samea Baker 610-310-0962	Worton, MD
26 Oct	Hewes Drive	Contact Darby Hewes 410 778-6409, details on page 4	Chestertown, MD
26-27 Oct	BVDC Teddy Bear Trot and HDT	Visit BVDC Website for most current details; http://bvdc.shutterfly.com/	Fair Hill, MD
31 Oct	Mid-Atlantic Recreational Driving Weekend	Visit ADS Website for most up to date details; midatlantic@americandrivingsociety.org	Fair Hill, MD
2-Nov	Cones Challenge Series	3rd and final installment of the Cones Challenge at Mid Atlantic ADS Drive Series	Fair Hill, MD
1-Nov	DDC Mid-Atlantic Drive Breakfast	DDC is hosting the Mid-Atlantic Drive Weekend Breakfast on Sunday am; Coordinator is Barbara Belden. If you would like to volunteer and assist Barbara, call her at 410-708-4654	Fair Hill, MD
9 Nov	DDC Drive at Canvas-back Farm	Jane Bailey 443-988-1395, details to come	Sudlersville, MD
7 Dec	Mt. Harmon Plantation Drive	Anna Klumpp details to come	Cecilton, MD
14 Dec	Holiday Party and Elections	Nutter Marvel Carriage Museum, Donna Hurst & Sherry Harris 410-482-2402 Chairperson	Georgetown, DE

Let's Get Driving Clinic for GREEN or New Drivers -Oct 19

WHAT IS THIS CLINIC ABOUT? This clinic is intended for new carriage drivers or folks wanting to get into the sport of driving or working with their equines.

WHO? Established clinician/instructor Mr. George Parris of Delmar, Delaware; Assisted by members of the Delmarva Driving Club.

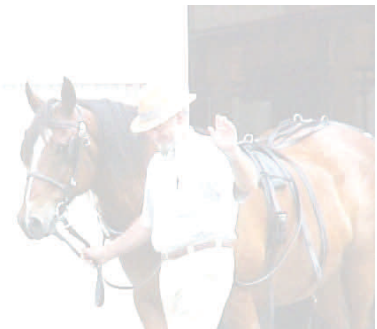
WHEN IS THIS CLINIC? Oct 19 Saturday (Rain Date -to be scheduled)

TIME? All day-Starts at 9am; breaks for lunch and continues in the afternoon

COST? FOR DDC Members: \$30 for AM Session; \$30 for the PM; All day DDC discounted rate \$50; Non Member \$40 AM; \$40 PM session; All day non-DDC member discounted rate: \$70

WHERE? Forgacs Farm- High Hopes Farm @ 8814 Fisher Rd. Denton, MD 21629
Auditors free *Please do not bring small children or dogs for safety reasons*

WHO TO CONTACT: Pao Lin Hatch (240) 274 6180 information and RSVP; Day of event: Bonnie F. (410) 463-1466



MEMBERS

DON'T FORGET TO SAVE AND SEND YOUR PROOFS OF PURCHASE FOR ALL TRIPLE CROWN LEGEND PRODUCTS.. DDC earns \$.25 for each proof of purchase submitted!.. For more information about this great fundraiser..

Check out <http://>

www.southernstates.com/Offers/

[Rewards-Programs/show-program.aspx](http://www.southernstates.com/Offers/Rewards-Programs/show-program.aspx)

Delaware Equine Council

meets on the 3rd Monday of each month at the Harrington, Moose Lodge. Special meeting locations may vary.

For more information check <http://www.delawareequinecouncil.com>

Or phone
Stan 302-684-3966

CONES CHALLENGE I

September 14, 2013

Cair Paravelle Farm, Still Pond, MD

The first in the Biothane USA sponsored Cones Challenge Series is history, with a small but dedicated group of drivers now in the running for the top prize of a \$500 Yonie's Harness Gift Certificate. It was perfect September Eastern Shore weather for the festivities at Anna Klumpp's beautiful Cair Paravelle Farm in Still Pond, MD. The courses flowed well for large and small while supplying a suitable amount of anxiety for the drivers. Divisions were adjusted to Shortened Course (VSE) and Lengthened Course (everyone else), allowing the Jackpot and Stakes classes to pay better. Last year's Stakes Keyhole became a second and higher paying 50/50 Jackpot and a new \$200 Progressive Stakes class was added, giving drivers payout in three of five classes.

Jane Osborne, Oxford, PA, brought her TB/Welsh pony Oh My Goodness to "give it a try" and won all three of the earlier classes in the Lengthened Course Division. It is a blast to watch her pony go and we hope next time she stays to drive the difficult courses as well. Anna Klumpp with her mare Mighty Aphrodite barreled through the courses to win all three of the earlier classes as well as the Jackpot Keyhole in the Shortened Course Division.

Not everyone stayed around for the more difficult courses, but it was evident the edge went to those who attended the course walk/strategy session with Kim Stover on the previous day. The mentally tricky Progressive Stakes course took its toll, but Donald Hewes of Chestertown, MD with his young Fjord gelding Karison, stuck to strategy and went clear to take the top prize in the Lengthened Course Division.

In the Shortened Course Division, Anne Adams of Elkton, MD, was not only on her maiden voyage in driving competitive cones but doing it with a young, green Jiminy Cricket (owned by Anna Klumpp). Green or not, Anne and Cricket pulled it together posting a clear round to win the Progressive Stakes class. Both drivers are students at Heritage Driving Center.

Many thanks to our Stakes Class division sponsors, Delmarva Feed, Kennedyville, MD; Kingstown Home, Farm & Garden, Inc., Kingstown, MD; Comegys Bight Farm, Chestertown, MD; Cair Paravelle Farm, Still Pond, MD; and New England Carriage Imports, Avondale, PA.

For the Biothane USA sponsored Cones Challenge Series High Score Award, Anna Klumpp with her single VSE Mighty Aphrodite is in the lead, but the others are nipping at her heels. Anne Adams with Jiminy Cricket is in second, but only a few points back in third place. Annie Renzetti, Clayton, DE, and her 17.3hh Xbred Moose is tied with Donald Hewes and Karison, with the others following closely. At this point it is anyone's game.

Hearty thanks to Michael Lawrence, Cheryl Aiken, Carrie Campbell and Peter Renzetti, for timing, scribing, judging, resetting courses, etc. etc. We have a new driving convert in Carrie, but it appears Cheryl is lost to us as a volunteer. "I am driving this next time!" was heard more than once throughout the day.

The next competition in the series, Cones Challenge II, will be held on October 12, again at Cair Paravelle Farm, Still Pond, MD. The final Cones Challenge III (double points) will be held November 2, during the Mid-Atlantic Recreational Driving weekend, at the Fair Hill Equestrian Park, Fair Hill, MD. The series high score award will be presented at this time.

For more information and a prize list go to www.worthmoreequestrian.com and click on the events tab.

August 15 Extra Board of Directors Meeting Minutes

August 15, 2013....Extra BOD meeting

Present: Donna Hurst, Jackie McCann, Joan Smith, Carol Seiler, Noble Cahall, Jane Ramsey, Martha MacDonald. Absent: Pao Lin Hatch

Jackie McCann confirmed insurance coverage for Jane Bailey's Canvasback Farm drive in November.

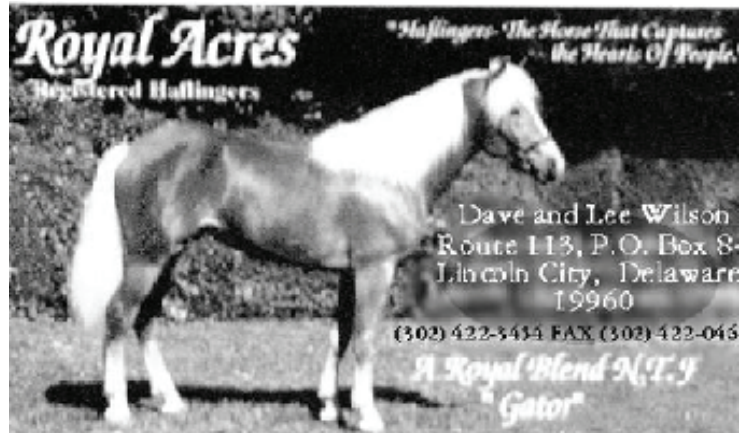
Noble Cahall reported on visiting the Queen Anne County Fairgrounds in Centerville and recommended it for a venue for the DDC show. The grounds have good stalls, one large arena and a large grassy area. Joan Smith will look into availability and cost. The grounds are just off Rt. 18 and easily accessible from all areas.

The question was raised about what insurance might cover attendees at DDC events, especially those taking the reins of someone else's horse. We will confirm with George Parris and Bonnie Forgasc regarding their trainers or homeowners insurance to cover the Newbie Clinic.

At the Newbie clinic, paid attendees will be offered a lunch. Auditors must bring their own lunch if staying for both sessions. Helmets are mandatory for drivers 18 years old and younger and strongly recommended for novice adults. This event was approved by the BOD as was the renting of a porta-potty for Jane Bailey's event.

Respectfully submitted.

Martha MacDonald



DAVE WILSON
Auctioneer & Sales Mgr.

"Our Services Have
Often Been Copied,
But Never Duplicated"

WILSON'S AUCTION SALES, INC.
COMPLETE AUCTION SERVICE AVAILABLE
Antiques * Real Estate * Personal Property * Appraisal
PUBLIC CONSIGNMENT AUCTION EVERY SATURDAY 10:00 A.M.
AUTO AUCTION EVERY TUESDAY 6:00 P.M.
Rt. 113, 1 mile south of Lincoln, Delaware
302-422-3434
FAX 302-422-0462



President

Donna Hurst
302-492-3932
Justamoose@comcast.net

Sunshine Darlene Logan
maneship@yahoo.com or 410-200-0960
Photography Archives Martie Bolinski
410 398-0257

Vice President

Pao Lin Hatch

Web Master: Pao Lin Hatch

Membership Chair

240 274 6180
paoball2000@yahoo.com

webmaster@Delmarvadrivingclub.com

Secretary

Martha MacDonald
609-510-7465
armadale98@comcast.net

Board Members:

Noble Cahall (302) 388-8776

Sherry Harris (410) 482-2402

Jane Ramsey (302) 659-2827

Carol Seiler (443) 466-5043

Joan Smith (610) 299-1191

Treasurer

Jackie McCann
(302)233-4660

Webpage <http://www.delmarvadrivingclub.com>

Newsletter Editor Pao Lin Hatch

Delmarva Driving Club
c/o Pao Lin Hatch
22988 Fairgale Farm Lane
Chestertown, MD 21620