

# Delmarva Driving Lines

October 2003

Newsletter of the Delmarva Driving Club, Inc.

<http://www.delmarvadrivingclub.com>  
35913 Fall Harvest Dr.  
Laurel, DE 19956

## Meeting Schedule

October 1 DDC Business meeting 7:00 pm at the Redden Forest Carriage House.

November 5 DDC Business meeting 7:00 pm Redden Forest Carriage House

December 3 DDC Business meeting 7:00 pm Redden Forest Carriage House

## Inside this issue:

- DDC Meeting Schedule p.1
- 20th Anniversary Celebrations p. 1
- DDC Meeting Minutes September 2003 p. 2
- Special Award Presentation p. 2
- Fall Harvest p. 3
- Calendar of Events p. 4
- Fair Hill Notices p. 4
- Redden Drive Reminder p.4
- Elections Notice p. 5
- Cedarcrest Driving Show p. 5
- Activities Updates pp 5-6
- Classified p. 6
- Wee Willy Sez p. 6
- Sunshine p. 6
- Christmas Party Update p. 6
- DEC Update p. 6
- Business Card Advertising p.7

## SPECIAL NOTICE - COGGINS

If you are bringing a horse to a DDC event, please be sure you have your Coggins paperwork with you. If you are asked to produce and do not have it, you WILL be turned away from the event.

## Delmarva Driving Club Celebrates its 20th Anniversary

20 years ago, a small group of people, who wanted to celebrate their driving horses and camaraderie, got together for a pleasure drive from Fruitland to Iron Furnace. The drive, along shaded country roads covering about 5.5 miles of scenic landscapes, culminated at the museum at Iron Furnace. This was the official start of the Delmarva Driving Club.

To celebrate the passing of 20 years, a group of club members came together on September 11, 2003 to re-enact the historic drive, followed by another drive and dinner at Laurel Saddle Friends on September 20th.

### Furnacetown Pleasure Drive - September 7th

A restaging of the original drive that started it all at Delmarva Driving Club took place on September 7th, with 10 hitches and about 30 people. The 5.5 mile drive on shady roads from Fruitland ended at Iron Furnace where a break was taken for lunch. Dessert was provided by Lois and Ed Evans before the return drive.

A big THANK YOU to Ed and Lois for putting this drive together for us!



### 20th Anniversary Pleasure Drive and Dinner at Laurel Saddle Friends

On September 27th, the Delmarva Driving Club hosted a drive and dinner at Laurel Saddle Friends, outside Bethel DE.

Friends hitched their horses and drove before sitting down to a fine dinner of fried chicken and delicious side dishes. We had 60 people; 32 members and 28 guests.

We want to thank the Laurel Saddle Friends for allowing us to use their fine facility for our event. And of course, thanks to Sherri Harris and her team (Paula Barto, Peg Coster, Pam Savage, Kay Mildon) and setup help from Wayne Conner, Cyndi Wolfe and Ed Evans. Wayne Conner and Cyndi Wolfe set up the drive/ride. Also, thanks to Ed Banning who led us in grace before dinner and to Lois Evans who read us a history of the past 20 years of club drives and activities.

After dinner, and recognition of past officers, current president, John Bolinski presented awards to 3 members who were instrumental in the start of the club and who have continued their unstinting support of the driving club and driving community as a whole during these years. Awards and lifetime memberships were given to Lois Evans, Ed Evans and Sharon Evans as a sign of appreciation for all they have done. Coffee mugs were handed out free to members who attended the dinner and an additional \$140 worth of mugs were sold. There are still mugs available at \$5 each. Contact Sherri Harris - or come to Fall Harvest.

# Delmarva Driving Lines

## Information Please!

Do you have any driving or horse related articles, stories, quotes, pictures, web pages of interest, jokes or other information, including notice of events, you'd like to share with the DDC members through the newsletter? If so, please send them to:

Martie Bolinski  
986 Irishtown Rd.  
North East, MD 21901  
bolinsj@dol.net

## Delmarva Driving Club September/3rd /2003 Meeting Minutes

President John Bolinski called Sept/3/2003 meeting to order at 7:00 PM at Redden Forest Carriage House. There were 18 members present, and 3 guests.

Secretary's Report: August/6th/2003 minutes were approved as read.

Treasurer's Report:  
Checking account balance, as of Sept/3rd/2003 in the amount of \$864.86  
Income: \$217.00  
Expenses: \$168.50  
CD#1--\$3,658.15 plus \$18.35 interest. Total \$3676.50  
CD#2--\$3812.21 plus \$14.32 interest. Total \$3826.53

New Business:  
Pam checked on more interest in several Banks for CD#1. After discussion on where to place CD it was decided and a motion was made by Cyndi Wolfe to put \$3000.00 on 6 month CD and to put the balance of \$694.94 in checking and if not used to put back into the CD Seconded by Peggy Koster.

Christmas Dinner: Sherry reported she had C&R Center for Friday Dec.12th for Christmas Party.

Paula reported that there was a gas leak at the C&R. Sherry will check into this issue.

Paula will also check on 2004 and 2005 at the Redden Lodge.

Sunshine: Lois reported \$26.32 balance Cards were sent to Rachel Marine, Janet Dorman, Mickey Mottor.

Membership: Jon May from Justin Texas

Old Business:  
20th DDC Anniversary Sept/27th:  
Ed Evans will transport trailer to grounds.  
Club House will be set up Friday night.  
Sherry asked for all Registrations to be in before or by Sept/3/2003  
Wayne Conner will be leading this drive.  
Lois reported that the lettering on the trailer will be done Sept/23rd or 24th .  
Lois also asked for volunteers for Oct 19th a work day to get things ready for Fall Harvest.

Driving Events: Watch for all events in your newsletter.  
50/50 won by Peggy Koster in the amount of \$9.00  
Refreshments: were served by Edwina Daschuk  
Oct refreshments John and Martie Bolinski

Adjournment: Hearing no further business Paula motioned to adjourn. Sec by Pam.

## Special Recognition Awards

Our congratulations to Lois, Ed and Sharon Evans for receiving a special recognition award for long and faithful service to the Delmarva Driving Club.

All three of these fine individuals were instrumental in starting the DDC and over the years, have served in many key positions and have continually given of themselves to serve the needs of the DDC membership.

In recognition of their outstanding efforts, Lois, Ed and Sharon were each presented a special certificate and awarded a 'lifetime membership' in the DDC. The awards were presented during the 20th Anniversary Celebration on Saturday, September 27, 2003.

Please join us in congratulating Lois, Ed and Sharon on earning such a well deserved award from their fellow DDC members.

John Bolinski, President



Sharon Evans receiving her award at the 20th Anniversary Dinner.

# Delmarva Driving Lines

## Fall Harvest Work Day - October 19, 2003

We need volunteers to help set up and get ready for Fall Harvest. If you can lend us a hand, we'll be starting at 9:00 am at Ed and Lois's. There will be a lunch break around noon; chicken will be provided, but if you want to contribute a covered dish, that would be great. Bring work gloves and wear sturdy shoes. We need help setting up and moving heavy objects and 'big stuff' and we need help decorating. If you can contribute pumpkins, gourds etc, it would help out. We'll need help stuffing goody bags for exhibitors as well.

We also need help on the day of Fall Harvest - setup/directing assistance, shuttle providers, horse/pony/mule/carriage rides, public parking directors, registration, 50-50 sales, announcing and 'museum' display coverage (docents).

We have no blacksmith or petting zoo so far this year, both of which draw a lot of interest. Anyone out there can provide anything?? We will have the 'sheep to shawl' exhibit again this year and many of the others that have been so popular.

Remember, this is our only big money raiser for this year, so we need everyone's support!! Bring a horse, bring a friend, rent a craft table. Lots to do! contact Lois Evans 302-875-4971 to volunteer or for more information.

## FALL HARVEST #9 - CAN YOU BELIEVE IT?

Set aside Saturday, October 25, for a day with other members and DDC friends, playing with their horses (or mules, or ponies, or even oxen) to benefit the DDC treasury and help cover 2004 plans financially. Our Fall Harvest at Pepperbox event is the only one on the peninsula offering horsedrawn shuttles from the parking area to the main event sites (Evans' rear pasture and side fields) where vendors, craftspeople, Civil War re-enactors, and proud owners of classic cars, trucks, restored tractors, working hit-and-miss engines assemble to reminisce, re-create, and re-live the good things from the past. Our horse events take place in the front pasture and this year we'll have plenty of field space for plowing and other related skills. Maybe even some of the tractor folks will hitch to a plow, or do the newest thing, show us some "tractor games".

For the new folks in our group, the Club usually earns about \$1000 for a day of fresh air, togetherness, fun, skill and other show-and-tell exercises while at the same time presenting the horse in REAL horsepower situations. Our exhibitors all present farm and horse-oriented ways of life—from the field work done by mules, oxen and draft horses to the carriage/buggy/wagon rides of our shuttles and John Williams' oxen. There are the sounds of machines used to power grinder wheels, small grist mills, Maytag wringer washers, spinning wheels, sawmills, and the windmill. Children line up to ride a pony or a BIG horse, and can often be seen riding again, and again! Blend all this with the smells—harness leather, hay, straw, scrapple being fried, chili and soups simmering, coffee percolating. And throughout it all, the sound of laughter, cheerfulness, and an overall hail-fellow-well-met feeling everywhere you look.

**So, you say, how can I become part of this?** Display your prized carriage, or piece of horsedrawn equipment. Volunteer an hour or two to help with the shuttle. Try your hand at the field work, using your own or hitching to something Ed has provided, like a harrow or plow. Spend an hour 'hosting' in the carriage building or the old kitchen, or the sheds with antique tools or harness and leatherworking tools. Do you know how to repair leather stitching? Braid whips? Have a set of rope harness to fit on your horse/mule? Know how to braid manes and tails? Have a horse or pony that would enjoy being ridden and loved for a couple of hours? Do you enjoy baking and will you make something for our kitchen (it's our MAJOR moneymaker)? Do you sew, embroider, tat, weave, quilt, make rag rugs, and will you show us how? Are you really good at selling 50-50 raffle tickets; boy, have we got the right spot for you! Do you really like being the grill king/queen and will you bring your grill to keep our spectators happy with all that great food? If you have a collection you'd like to showcase, we hope you'll share it with our friends. Got a special old-timey thingamabob you'd like to see if anyone else knows what it was used for? Bring it along and have some fun. Early risers are welcome to assist our exhibitors to get settled in for the day (like about 6:15 a.m.!).

Then there's the real nitty-gritty. We've set Sunday, October 19 starting around 9 a.m. for the beginning of preparations—haul out equipment, move some things around, do preliminary decorating, maybe even cleaning/sprucing up the graveyard, and fellowship at noon (food's on Ed and Lois). We'll even accept volunteers to stay later than the 3 p.m. 'curfew' on the 25th for 'clean up and put it away' help!

**Please call 302-875-4971 to sign up and show up. We guarantee a good time will be had by all!**

# Delmarva Driving Lines

## CALENDAR OF EVENTS

**Schedule of events for 2003**  
**New format: DDC items are in BOLD.**

*We will have more information about the activities below in future issues. If you can volunteer for any of these events, or have other events to suggest, please contact Heidi Ferguson. If you know of events of interest that are not DDC sponsored, let Martie know (410-398-0257 bolinsj@dol.net) Don't be bashful - we need your input and your support! There will be no activity unless it has a 'sponsor' If you can help out, let us know. If you plan to attend PLEASE contact the host at least 2 weeks before the event.*

### Fair Hill in the Fall Carriage Drive

If you enjoyed your spring drive at Fair Hill and would like another chance to enjoy the beautiful park this year, here is your chance.

A drive is being put together by Angela Cichetti Deppe, 410-795-8547 for Sunday November 2nd. There will be some guided drives at various speed/difficulty levels. A map will be available. There are no hookups available for this weekend, but rough camping at \$10 per night is available. Stalls are \$10 per night and there is a vehicle fee of \$2. Bring your own bedding and food. Please come prepared with safe equipment and seasoned horses. Negative Coggins required. Checks should be made out to 'Fair Hill' and sent to Angela by October 25th.

This is NOT a DDC sponsored event.

- **Oct 1 DDC mtg Redden Forest 7 pm; John Bolinski 410-398-0257**
- Oct 2 1st St Coon Hunters Harrington DE 7 pm Nyle 422-4094
- Oct 3 DQHA 7:30 pm Harrington, DE Amanda 697-6646
- Oct 3-5 A Driving Weekend at the Sussex County NJ Fairgrounds 973-948-5022 sgerber@nac.net
- Oct 4,5 Ground Training demo, Lectures/Demos and more at ChapterOne Farms. Helene Paxton 1-856-299-5124 or tm@chapteronefarms.com
- **Oct 5 Annual Redden Drive - Drive off at 1:00 pm. Bring your own picnic. Heidi Ferguson 302-422-5126 hunterhavenfarm@comcast.com**
- Oct 11 Milton Eque Ctr Show 9 am Karen 684-1818
- Oct 12 LSF Halloween Costume 12 N followed by game show; Reba 734-9649
- Oct 17-18 Martin's Auction Lebanon, PA; Karen and Paul Martin, Jr 717-354-6671
- Oct 20 - DEC mtg C&R ctr Nyle 302-422-4094
- Oct 23-26 Fair Hill International - CDE, CCI, Dog Agility, Sheep dog demos, K-9 demos and much more. contact www.fairhillinternational.com
- **Oct 25 Fall Harvest - Lois Evans 302-875-4971**
- Nov 1 - Assateague Drive - Carl Zimmerman
- Nov 5 DDC mtg at Redden 7:00 pm
- November 9, 10 Dave Wilson's Drive and Auction
- **Dec 12 DDC Christmas Party - C&R Center - Sherry Harris \*\*\* THIS INFO MAY CHANGE\*\*\*\***

### Fair Hill International Festival In the Country

A great venue for horse and dog lovers. A partial schedule below shows some of many interesting sights and events. If you have time, drop in and see for yourself.

Oct 23 - CCI dressage, Country Shops and Food Court

Oct 24 - CCI and Pan Am dressage, Combined Driving Dressage, MD State Police K-9 demos, dog agility, Country Shops and Food Court

Oct 25 - Dog agility, Pan Am Endurance, Combined driving cones, Stuart Family Minis, Pan Am cross country, Sheep herding demos, Reining demos, Country Shops and Food Court

Oct 26 - Dog agility, Stuart Family minis, CCI show Jumping, Combined driving marathon, sheep herding demos, Country Shops and Food Court

Come out and enjoy the festivities.

### DDC Annual Redden Forest Drive

Our annual Redden drive is this Sunday, October 5th. Drive-off at 1:00 pm. Bring your own picnic for after the drive. Heidi Ferguson is drivemaster 302-422-5126. Bring Coggins.

### Sussex County NJ Driving Weekend at the Sussex County Fairgrounds, Augusta, NJ October 3-5, 2003

Classrooms, clinics, pleasure driving, social activity and fun, food and festivity. Clinicians include Lisa Singer and other well known drivers. Friday night potluck. 973-948-5022 or sgerber@nac.net 4

DELMARVA



DRIVING CLUB INC.

# Delmarva Driving Lines

## **2003 ELECTIONS!**

**In accordance with the DDC bylaws, the following nominations are being presented to the membership as candidates for office in 2004**

So far, we have a full slate of nominations for all officers and for the opening BOD position. The only problem is that ALL are running unopposed. Surely, someone out there wants to give these fine folks a run for their money? If you would like to volunteer to run as an officer or director, please contact Sherri Harris ASAP. So far we have:

President - John Bolinski (incumbent)  
Vice President - Heidi Ferguson  
Secretary - Kay Mildon (incumbent)  
Treasurer - Pam Savage (incumbent)  
Director - (Cyndi Wolfe vacating) Sherri Harris

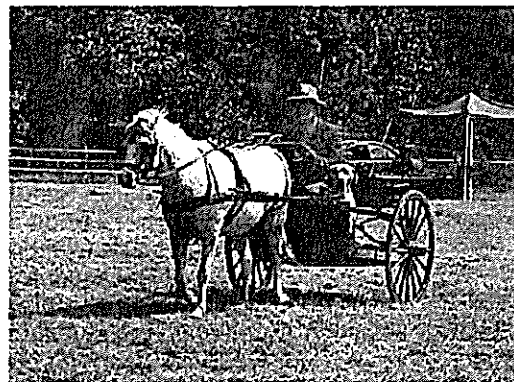
Two remaining directors' terms have one more year to run (Wayne Conner, Martie Bolinski).

Voting will take place at the December business meeting. Anyone wishing to get on the ballot may call Sherri Harris (410-482-2402) or John Bolinski (410-398-0257) or you can place yourself on the ballot at the December meeting.

**Come out and vote!**

## **Cedarcrest Driving Show**

Congratulations to all DDC members who participated in the F. Thaddeus Warrington Driving Show at Cedarcrest, and especially to new DDC members, Scott Myrer, who won the ride-and-drive class and Reserve Champion and to Larry and Valerie Langford for their High Point Draft Horse, Concours D'Elegance and Championship with their Percheron. There will be more photos on the website.

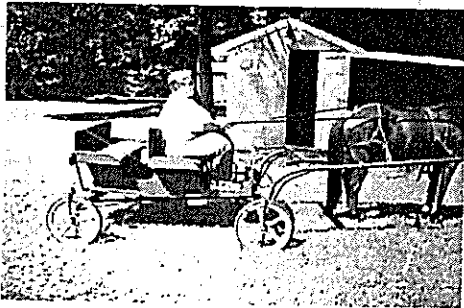
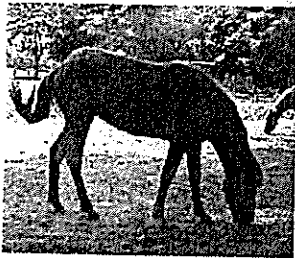




# Delmarva Driving Lines

## Classified

For sale: Registered Chincoteague ponies - 9 yr Stallion, 1 yr. filly. Each \$1500 OBO. 4-wheel, 2 seat carriage for 13 H pony \$500. phone Kathy 302-934-6846 or email AssateagueAcres@aol.com.



## Giant Coloring Books

donation \$10 to DEC, see Peg Koster or Paula Barto

## DDC 20th Anniversary Mugs

Beautiful ceramic mugs with the DDC logo and 20th anniversary line in cream (mug) and burgundy (lettering). See Sherri Harris 410-482-2402 \$5 each.



## Sunshine September 2003

Cards have gone or will go out to: Frank Motter's wife, Former member, Iola Wells in ICU Pete Bigelow (death of his mother) **If you know of anyone in the club who needs a sunshine card, please contact Lois Evans with the information.**

## Letters to the Editor

We invite all DDC members to write in to the newsletter to express their thoughts and views. We will print all letters as space allows.

## DDC Christmas Party - MAKE NOTE OF CHANGES

We are considering changes to the Christmas party that will be discussed and voted on at the October meeting. Some folks think that we should change the date and venue (Dec 17th at Redden instead of Dec 12th at C&R). Some folks think we should skip the party at Christmas because we just had a big, free (to club members) party for the 20th anniversary. If you have strong feelings one way or the other, come to the meeting and let us know or contact one of the officers or directors so they can make sure your views are heard at the meeting.

IF we have a party, Heidi Ferguson has agreed to spearhead preparations BUT she will need help with the decorating. If you have some decorating talent and would like to help, let Heidi know at 302-422-5126; hunterhavenfarm@comcast.net.

## Delaware Equine Council Update

Coloring books are still on sale for \$10 and make great Christmas presents.

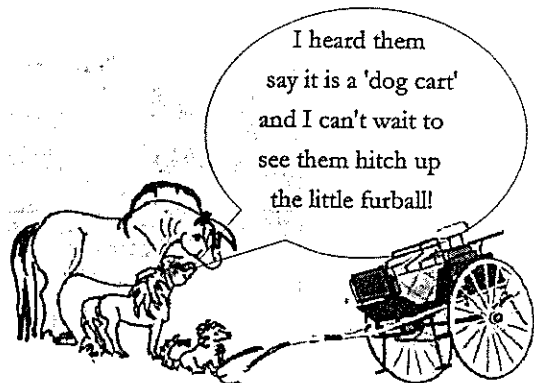
Housebill 160 regarding Sunday hunting still needs everyone's support. Contact your representatives and senators to let them know we ARE NOT in favor of this bill.

Marge and Mark Davis were honored with a plaque by members of BLM at the Mustang Savvy Days in Harrington for their dedication and continued support of Wild Horses and Burros. Congratulations.

Laurel Saddle Friends will host their annual Halloween costume and game show 12 noon on Oct 12th call Reba 302-034-9649. Next meeting 10/20/02 7:00 pm C&R Center. Call Nyle for directions 302-422-4094

Next meeting 12/15/03 at Paradee Bldg, elections, speaker, refreshments. New program to promote our equines - bring your old horsey magazines to the meeting or call Paula. They will be placed in offices through the state with the DEC label on with our website attached. Paula could use some help distributing.

*Wee Willy Sez*



# Delmarva

DAVE WILSON  
Auctioneer & Sales Mgr.

"Our Services Have  
Often Been Copied,  
But Never Duplicated"

## WILSON'S AUCTION SALES, INC.

COMPLETE AUCTION SERVICE AVAILABLE

Antiques \* Real Estate \* Personal Property \* Appraisal

PUBLIC CONSIGNMENT AUCTION EVERY SATURDAY 10:00 A.M.

AUTO AUCTION EVERY TUESDAY 6:00 P.M.

Rt. 113, 1 mile south of  
Lincoln, Delaware

302-422-3454

FAX 302-422-0462

5/03

## DRIVING EQUIPMENT • APPOINTMENTS • GIFTS



Willowdale Town Center • Routes 82 & 926 • Kennett Square • PA 19348

800-622-8543

www.DrivingEssentials.com

7/03-12

## PULLING FOR YOU IN REAL ESTATE

*On Maryland's Eastern Shore*

Deborah J.  
'Deb'  
Dawkins

**COLDWELL  
BANKER**

phone (410) 310-9569

RESIDENTIAL BROKERAGE

Email: ddawkins@coldwellbankermove.com

17 S. Washington St., Easton, MD



856-299-5124

Breeding, Layups, Broodmares,  
Training, Lessons, Boarding,  
Indoor Arena, Carriage Storage

Owner/Operators -

Thomas Marrion & Helene Paxton

87 Pedricktown-Woodstown Rd.

Pedricktown, NJ 08067

email:

tm@chapteronefarms.com

3/03

## Upcoming Equine Events at Chapter One Farms in Pedricktown NJ

DDC members are cordially invited to attend the following events at Chapter One Farm in the indoor arena. Dates/topics are still subject to change. Please contact Helene Paxton/Tom Marion for additional information. 856-299-5124 or (cell) 443-253-4135 hpaxton@bioguidance.net

December 6th 2003, Saturday 9:00 am  
(Training Level) Sporting Day of Traditional Driving:  
Turnout  
Cones  
Obstacles

January 17th 2004, Saturday 9:00 am  
(Training Level) Arena Driving Trial (ADS Sanctioned)  
Dressage  
Cones  
Obstacles

January 24th 2004, Saturday 9:00 am - 2:00 pm  
Breeding Clinic:  
Choosing a stallion  
Live cover  
Artificial Insemination  
Semen transport  
Mare Care  
Costs  
Stallion Promotion and Marketing  
(Lunch provided)

February 14th 2004 Saturday 12:00 N  
Sleigh Rally with Dinner at Isabel's Victorian Rose Cafe  
Valentines Day theme. Best decorated sleigh and costume (reservations will be limited)

February 28th 2004 Saturday 9:00 am - 1:00 pm and 2:00 - 4:00 pm DEMOS  
Conditioning the competition horse  
How to ready your horse for any type of competition or keeping your horse fit for any use. Use of equine exercisers etc.

March 13th 2003 Saturday 9:00 am - 2:00 pm  
Turnout and Presentation  
Get ready for the show season with a new Turnout. How to clip your horse properly  
Presented from a judge's point of view  
2:00 - 4:00 pm - So Dressage Has You Intimidated?  
Dressage from a judge's point of view.

Let them know of any other clinic subjects you would be interested in.

**Officers:**

**President** John Bolinski  
410-398-0257  
bolinsj@dol.net

**Vice President**  
Sherri Harris  
410-482-2402

**Secretary** Kay Mildon  
410-543-1527  
mommomclydesdale@aol.com

**Treasurer** Pam Savage  
302-684-1242  
kitten@dmv.com

**Directors** Cyndi Wolfe  
Wayne Conner  
Martie Bolinski

**Sunshine** Lois Evans  
302-875-4971

**Activities Coordinator and Safety Officer**  
Heidi Ferguson  
302-422-5126  
hunterhavenfarm@comcast.net

**Web Master**  
<http://www.delmarvadrivingclub.com>

Heidi Ferguson  
302-422-5126  
ddc20@comcast.net

**Photographer**  
Kathy Clausen  
302-934-6846  
assateagueacres@aol.com

Delmarva Driving Club  
35913 Fall Harvest Drive  
Laurel DE, 19956