

Delmarva Driving Lines

December 2003

Newsletter of the Delmarva Driving
Club, Inc.
<http://www.delmarvadrivingclub.com>
35913 Fall Harvest Dr.
Laurel, DE 19956

Meeting Schedule

January 7 DDC Business
meeting 7:00 pm Redden
Forest Carriage House

February 4 DDC Business
meeting 7:00 pm Redden
Forest Carriage House

March 3 DDC Business
meeting 7:00 pm Redden
Forest Carriage House

Election News

For 2004, officers are:
President - John Bolinski
Vice President - Cyndi Wolfe
Secretary - Kay Mildon
Treasurer - Pam Savage
Director - Joe Paul
(Director - Wayne Conner)
(Director - Martie Bolinski)

I know you will all join with us in welcoming the new officers and board. Come out to the Christmas party and talk to us about plans for 2004

Presidents Message

I would like to take this opportunity to wish all of you and your families a safe and happy holiday season.

This year, 2003, has been a very good one for our club. We had many events that provided safe fun and no major injuries to our members. These types of successful activities only take place through the efforts of many people, and I would like to thank all that took part in making your club a success.

A special thanks goes to Sherri Harris and Cyndi Wolfe for volunteering to serve as Vice President and Director, respectively, during this fun year.

I look forward to serving you again in 2004 and meeting with our newly elected officers and directors.

Please feel free to contact any of your officers and directors with ideas that could make our club even better.

Thanks,
John Bolinski, President

Inside this issue:

DDC Meeting Schedule p.1
Election Results p. 1
Dave Wilson's Drive and Sale p.1
President's message p.1
DDC Meeting Minutes November
2003 p. 2
Christmas Party 12/17 p. 3
Wayne Conner's Play Day p. 3
Calendar of Events p.4
Congratulations p. 4
DEC news p.4
Helpful Hints from Heidi p.4
Assateague Drive p. 5
2004 Dues are Due p. 5
Classified p. 6
Sunshine p. 6
Letters to the Editor p. 6
Wee Willy Sez p. 6
Business p. 7

DELMARVA



DRIVING CLUB INC.

Dave Wilson's Drive and Auction

As always, a great driving day enjoyed by DDC members and many others followed the next day with an auction of great equine items. A weekend of fun with friends, good horses, good bargains and lots of food. See Cathy's photos of the drive on the website!

Delmarva Driving Lines

Information Please!

Do you have any driving or horse related articles, stories, quotes, pictures, web pages of interest, jokes or other information, including notice of events, you'd like to share with the DDC members through the newsletter? If so, please send them to:

Martie Bolinski
986 Irishtown Rd.
North East, MD 21901
bolinsj@do.net

Delmarva Driving Club November/5/2003 Meeting

President John Bolinski called November/5/2003 meeting to order at 7:00 PM at Redden Forest Carriage House. There were 12 members present.

Secretary Report: October/1/2003 minutes were approved as corrected.

Treasury Report:

Checking account balance, as of Nov/5/2003 for \$5,845.27

\$3,694.94 earmarked for investment. Amount available in checking account is \$2,150.33

Fall Harvest income---\$2,512.70

Expenses--\$830.22

Profit from Fall Harvest --\$1,682.48

Income: \$2,508.65

Expenses: \$1,157.75

CD#2--\$3,812.21 No activity.

The 3rd Quarter Financial Report Income from July/2nd/2003 to October/1/2003 Total Funds available are \$8,320.90

Motion to accept treasure report as read by Wayne Conner. Seconded by Paula Barto.

Sunshine: Lois reported \$51.70 and a card was sent to Bonnie Forgacs.

Membership: No new memberships.

Old Business: Christmas Dinner:

Heidi reported that she was called and told to get Smith caterer. Heidi will make decision on this issue.

Fall Harvest: Lois talked on what could, or if any changes should be made to improve for next year. Everything was great money was made, and we had great weather.

New Business:

Dec. meeting (Elections)

Slate of Officer's for 2004

President---John Bolinski

V. President---Heidi Ferguson

Secretary---Kay Mildon

Treasurer---Pam Savage

Joe Paul for Director

There will also be nominations from the floor.

Driving Events: Watch for all events in your newsletter.

Kay will take care of Eastern Christmas parade, Dec/6/ at 6:30 PM

Wayne and Phyllis Conner is having a Play Day at their farm on Nov/16 at 11:00AM

Carl gave a report on the great time everyone had on the Assateague Drive.

DEC Nov/17th meeting at the C & R Center

Dec/15th meeting C & R Center.

50/50 won by Carl Zimmerman in the amount of \$10.00 and \$8.00 was donated back to DDC.

Refreshments: Kay Mildon/John and Martie Bolinski

Adjournment: Hearing no further business Peggy Koster motioned to adjourn and seconded by

Ted Parmley.

Respectfully, Submitted

Kay Mildon

Secretary

Delmarva Driving Lines

DDC Christmas Party

Our annual Christmas party will be 6-10pm at the Redden Lodge on December 17th. Dinner by 'Jimmy's' will be at 7:00 pm.

We will have a 'Bandits Gift Exchange' this year. To take part in this exchange, you need to bring a wrapped, unlabeled gift. To make it fun, we suggest bringing a gift that someone may have given you that you have absolutely no use for - like Aunt Mildred gave you that horrible tie for your last birthday, or your grandparents gave you that ugly little table lamp with the hula dancer on it or..... Something you'd like to pass along. Each person taking part will receive a number. As your number is called you pick from the unlabeled gifts. If you do not like the gift you picked, you have the choice of exchanging it for something a previous person has gotten - whether or not they want to exchange - hence 'bandit's exchange'. No gift can be exchanged more than 3 times. Once a gift changes hands 3 times it is 'grandfathered' and cannot be chosen again. Lots of fun!

The minimum number for the caterer is 50. To date, we do not have enough to meet this minimum and therefore, the club will have to pay for the difference. If you can join us, please contact Heidi Ferguson ASAP at 302-422-5126. We'd really like your company.

Bring your Christmas CDs or tapes if you like.

'Play Day' at Wayne and Phyllis Conner's

Words cannot describe the fun had at this 'play day' event at Wayne & Phyllis's lovely farm. It was an outstanding opportunity to informally get together and do what was fun, new and needed - whether it was ground driving for the first time, carriage driving, pulling the sled, riding or whatever you like. There were plenty of folks available to help out if you were a little green yourself or needed help.

Cyndi Wolfe got Prince ground driving and hitched for the first time, Cathy Klausen drove Ramsey! The weather was great and it was a lot of fun!



Kathy was able to get many pictures of the activities, as well as participating herself, enjoying the food, desserts and conversation about the day's events.

Be sure to go online to see more great photos of the event!

Our sincere thanks for Wayne and Phyllis for organizing this event. Their love of the horses and members of the Delmarva Driving Club is surely demonstrated.



Delmarva Driving Lines

CALENDAR OF EVENTS

Schedule of events for 2004
New format: DDC items are in BOLD.

There will be more information about activities future issues. Check each month for changes and additions. If you can volunteer for any of these events, or have other events to suggest, please contact Heidi Ferguson. If you know of events of interest that are not DDC sponsored, let Martie know (410-398-0257 bolinsj@dol.net) Don't be bashful - we need your input and your support! There will be no activity unless it has a 'sponsor' If you can help out, let us know. If you plan to attend PLEASE contact the host at least 2 weeks before the event.

- Dec 15th DEC meeting Paradee Ct. Dover 875-7869
- Dec 17 DDC Christmas Party - Redden Lodge 6-10. Heidi, 422-5126.
- Jan 7 DDC business meeting 7:00 pm Redden Carriage House
- Feb 4 DDC business meeting 7:00 pm Redden Carriage House
- March 3 DDC business meeting 7:00 pm Redden Carriage House
- April 7 DDC business meeting 7:00 pm Redden Carriage House
- May 5 DDC business meeting 7:00 pm Redden Carriage House
- May 21-23 DDC Fair Hill Overnight drive
- June 2 DDC business meeting 7:00 pm Redden Carriage House
- July 7 DDC business meeting 7:00 pm Redden Carriage House
- August 4 DDC business meeting 7:00 pm Redden Carriage House
- September 1 DDC business meeting 7:00 pm Redden Carriage House
- October 6 DDC business meeting 7:00 pm Redden Carriage House
- November 3 DDC business meeting 7:00 pm Redden Carriage House
- December 1 DDC business meeting 7:00 pm Redden Carriage House

Delaware Equine Council update:

See your December issue of the Delaware Equine News for more information: December 15th mtg will be at Paradee Ctr. Dover 7:00 pm. Directions are in the DEC newsletter. Meetings for 2004 will be held at the Exhibitor's Bldg at the Harrington Fairgrounds every 3rd Monday of the month at 7:00 pm. Dues are being accepted NOW. Delaware Equine survey to be conducted starting in January. Read more about it in your DEC newsletter.

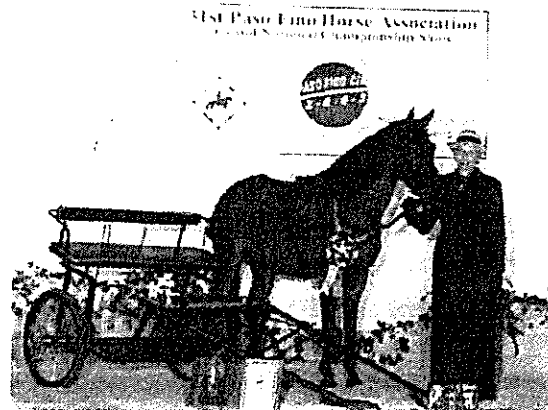
Helpful Hints from Heidi new feature!

*Put a squeazy rubber ball in the water trough in winter; it will help to prevent it freezing completely and will leave a drinking hole for the horses until you arrive to break the rest of the ice.

**Brittle feet can be improved by adding a sachet of gelatin dissolved in a mugful of hot water to one feed each day from 201 Handy Hints for Horse Owners by Karen Bush

Send us information for the calendar of events.
bolinsj@dol.net
410-398-0257

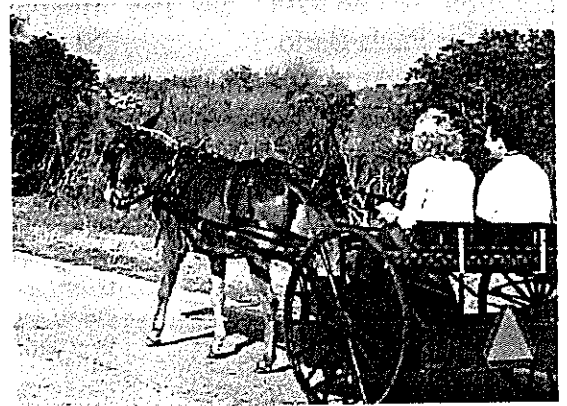
Congratulations: Last month we mentioned Cecelia Uhlman and "El Destino de La Rosa", Grand National Championship Driving Horse recognition at the Paso Fino Nationals. Here are the promised photos (by Larry Williams) of Cecelia and El Destino.



Delmarva Driving Lines

Assateague Drive

Our compliments to Carl Zimmerman for organizing a fantastic drive at Assateague! He even managed to get the best weather possible! The turn out was great with 12 carriages and over 30 people, the scenery was fantastic although the wild ponies could have shown a little more interest in their domesticated cousins. Several members of one carriage were able to see three 'full moons' all of which were in the carriage in front of them :-). After the hour and a half drive, the food, desserts and fellowship enjoyed by all went well with the many stories we had to exchange about the drive, especially the one's about the 'full moons' (OK, you had to be there). We all look forward to doing it again and appreciate Carl's efforts in pulling it together. Be sure to go to the web page to see some of the wonderful photos of the day's drive and fellowship.



2004 Dues

Its that time again. Dues are due. Please send the membership information below along with your dues to:

Pam Savage
27547 Martins Farm Rd.
Milton, DE, 19968

Please fill out information about your interests and suggestions for 2004 DDC events. thanks.

Name(s) _____, _____
_____, _____
_____, _____

Address _____

Phone _____ Email _____

Payment (\$20 per membership) _____

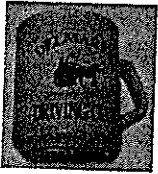
Suggestions for events, clinics, speakers, etc. Feel free to use extra paper.

Delmarva Driving Lines

Classified Ads

Giant Coloring Books
donation \$10 to DEC, see Peg Koster or Paula Barto

DDC 20th Anniversary Mugs
Beautiful ceramic mugs with the DDC logo and 20th anniversary line in cream (mug) and burgundy (lettering). See Sherri Harris 410-482-2402 \$5 each.



DDC Calendars

still some available - large (8.5X11, spiral bound) \$6. Shipping and handling extra or can be delivered to DDC meeting or event.
phone Martie 410-398-0257 or email at bolinsj@dol.net

Letters to the Editor

We invite all DDC members to write in to the newsletter to express their thoughts and views. We will print all letters as space allows.

Sunshine September 2003

Bonnie Forgacs, driving mishap
Steve and Heidi Cannon, death in family
Jack Shorthall, surgery

Nov 9, 2003

Dear Louis & Ed,

Thank you for including the trains in the Fall Fest again this year. Sorry I couldn't be there. I was taking a motorcycle course.

This was the best year yet. Keep up the great work.

Eleanor

From the Delaware Equine Council

Dear Delaware Equine Council Fair Booth Volunteer,
A big "THANK YOU!" to all who helped staff the Delaware Equine Council's booth in the Commodities Building during the recent Delaware State Fair. The Delaware State Fair management indicated that attendance was up over 300,000 this year, which shatters the old record!

Every year the Delaware Department of Agriculture holds a contest among commodity groups that set up exhibits in the Commodities Building. Participants are judged on criteria including appearance of display, the knowledge and friendliness of the people staffing the booth, if the people in booth are actual members of the association, stage demonstrations, promotion of their commodity and promotion of Delaware Agriculture in a positive manner.

The top three commodity groups were the Delaware Beekeepers, Delaware Dairy Princess Committee and the Delmarva Poultry Industry. The purpose of the commodities building and the prize money for the top three finishers is to encourage Delaware Commodity groups to promote a more professional appearance by next year's Delaware State Fair.

Please share this letter with the other members of your organization. The Delaware Equine Council thanks you for volunteering your time towards this valuable public education effort and we look forward to working with you in the future.

Sincerely,
Susan Truehart Garey, Fairbooth Coordinator
Delaware Equine Council and
Brenda Lewis, President,
Delaware Equine Council.

Wee Willy Sez



HO HO HO MERRY CHRISTMAS

From all of us - We wish you the best of the holidays! Drive on!



Delmarva Driving Lines

DAVE WILSON
Auctioneer & Sales Mgr.

"Our Services Have
Often Been Copied,
But Never Duplicated"

WILSON'S AUCTION SALES, INC.
COMPLETE AUCTION SERVICE AVAILABLE
Antiques * Real Estate * Personal Property * Appraisal
PUBLIC CONSIGNMENT AUCTION EVERY SATURDAY 10:00 A.M.
AUTO AUCTION EVERY TUESDAY 6:00 P.M.
Rt. 113, 1 mile south of Lincoln, Delaware
302-422-3454
FAX 302-422-0462

5/03

TWIN OAKS GRAPHICS - Custom Artwork



Stained Glass, Watercolor, Acrylics,
Hand-painted Clothing, Notecards
& Stationary.
Reasonable Prices. Custom work done from photos.
Contact: Martie Bolinski
Twin Oaks Graphics
986 Irishtown Rd., North East, MD 21901
410-398-0257
bolinsj@dol.net
http://bolinsj.tripod.com/twinoaksgraphics

3/03

DRIVING EQUIPMENT • APPOINTMENTS • GIFTS

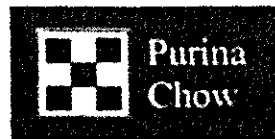


Willowdale Town Center • Routes 82 & 926 • Kennett Square • PA 19348

800-622-8543

www.DrivingEssentials.com

7/05-12



Bryan &
Brittingham, Inc.

George Parris, Jr.
Salesman

P.O. Box 156
Delmar, Delaware 19940
Phone 302 846-9500

3/03

PULLING FOR YOU IN REAL ESTATE
On Maryland's Eastern Shore

Deborah J.
'Deb'
Dawkins

COLDWELL
BANKER

phone (410) 310-9569 RESIDENTIAL BROKERAGE

Email: ddawkins@coldwellbankermove.com
17 S. Washington St., Easton, MD

Royal Acres
Best Blood Haulingers
"Haulingers 'The Horse' That Captures
the Hearts of People."
Dave and Lee Wilson
Route 113, P.O. Box 84
Lincoln City, Delaware
19960
(302) 422-3454 FAX (302) 422-0462
Royal Acres
Hauling

5/03



856-299-5124
Breeding, Layups, Broodmares,
Training, Lessons, Boarding,
Indoor Arena, Carriage Storage

Owner/Operators -

Thomas Marrion & Helene Paxton
87 Pedricktown-Woodstown Rd.

Pedricktown, NJ 08067 email:
tm@chapteronefarms.com

3/03

SUPPORT OUR ADVERTISERS
They help the DDC with postage costs!

Still Space Available
Advertise Your Business in
DelMarVa Driving Lines

Officers:

President John Bolinski
410-398-0257
bolinsj@dol.net

Vice President
Cyndi Wolfe
302-684-3870
wolfbutterfly@aol.com

Secretary Kay Mildon
410-543-1527
mommomclydesdale@aol.com

Treasurer Pam Savage
302-684-1242
kitten@dmv.com

Directors Joe Paul 302-754-5069
Wayne Conner 302-337-8828
Martie Bolinski 410-398-0257

Sunshine Lois Evans
302-875-4971

Activities Coordinator and Safety Officer
Heidi Ferguson
302-422-5126
hunterhavenfarm@comcast.net

Web Master
<http://www.delmarvadivingclub.com>
Heidi Ferguson
302-422-5126
ddc20@comcast.net

Photographer
Kathy Clausen
302-934-6846
assateagueacres@aol.com

Delmarva Driving Club
35913 Fall Harvest Drive
Laurel DE, 19956